

CabWriter 5.0.5 Release Notes 3-11-2022

New Functionality

Fixes

1. In a multi-box cabinet with a Lazy Susan on one end and the and an end panel cabinet stile on the other, the front and rear ties of the ladder base were the incorrect length.
2. In a multi-box cabinet with a Lazy Susan on one end and the and a blind or butt stile on the other, the front applied face of the ladder base was the incorrect length.
3. Fixed a problem with the Squared backs (as opposed to Angled backs) placed on both upper and lower Diagonal Corner cabinets. They were too wide and stuck over the sides.
4. Fixed a problem that only occurred with a number of conditions necessary: a stile that is not drawn, that stile had to have different widths in top and bottom cabinets, the problem cabinet was a base cabinet, the user was re-drawing the cabinet, and the user retrieved defaults from the cabinet before re-drawing and finally the user answered No to the question asking if you wanted to use the stored defaults. This would result in the cabinet's width either shrinking or enlarging.
5. Fixed an issue with divided base drawers when there were stretchers only dividing drawers; no mid-rails or face frames. Normally the gap between the bottom of the drawer opening and the bottom of the drawer box is $9/16''$ (depending on parameter settings), but in this case it was $15/16''$. Also, under these same conditions, the drawer box heights were mis-calculated and ended up shorter in height than what was possible.

CabWriter 5.0.4 Release Notes 12-2-2021

New Functionality

Fixes

6. At times a tilde (~) symbol would precede a Material Format in the Material Formats & Name section of the Optimized Cut List Diagrams or Optimized DXF Diagrams dialog box. The code has been changed to remove it.
7. Fixed a problem with Diagonal Corner and Lazy Susan cabinets with inset joinery. The instance name and component name were not restored after pockets were created.

CabWriter 5.0.3 Release Notes 10-21-2021

New Functionality

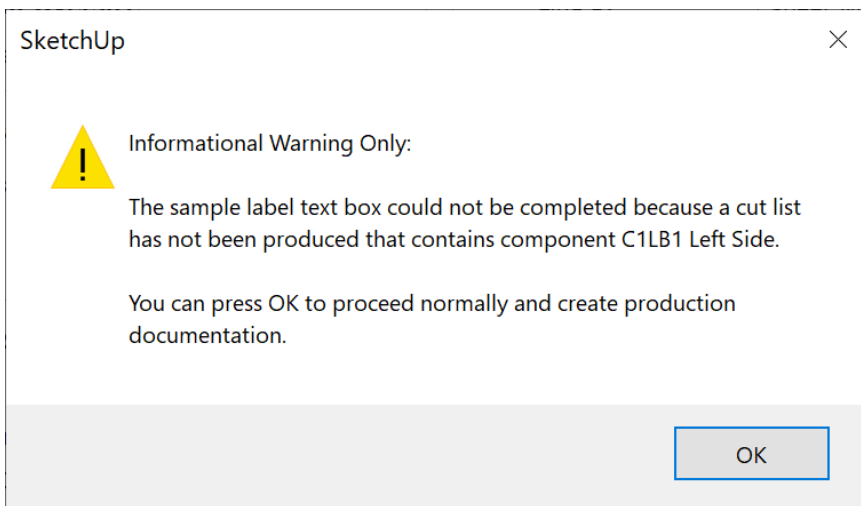
2. Made slight improvements in optimization efficiency.

Fixes

1. Removed the use of a global variable called \$exStrings. This global variable made CabWriter dependent on SketchUp loading extension files distributed with SketchUp. This dependence no longer exists.
2. Fixed a typo which caused a message variable (msg) to be treated as a method.
3. Fixed an issue where an instance could not be moved from a Sheet 2 or greater to Sheet 1.
4. Changed a warning message to make it more clear that it is informational only: Changed from:



to:



5. At times a tilde (~) symbol would precede a Thickness in the Sheet Sizes by Selected Material Name section of the Sheet Optimization Settings dialog box. The code has been changed to remove it.

CabWriter 5.0.2 Release Notes 8-26-2021

New Functionality

Fixes

1. Made a modification to allow Edit Cabinet on a divided cabinet drawn in CabWriter Version 4 to function as though the divided cabinet were drawn in Version 5.
2. Fixed a problem with Diagonal Corner and Lazy Susan Base cabinets where the front and back tie extensions were drawn to the wrong length.
3. Fixed a problem with sheet optimization when moving an instance to a blank sheet. The user was unable to select another instance to move.

CabWriter 5.0.1 Release Notes 8-2-2021

New Functionality

Fixes

1. Fixed an issue with square back corner Diagonal Corner cabinet where you couldn't edit the story stick or the cabinet.
2. Fixed a problem where when using Edit Cabinet to change a standard cabinet into a divided cabinet the dialog box OK buttons would not respond.